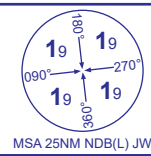


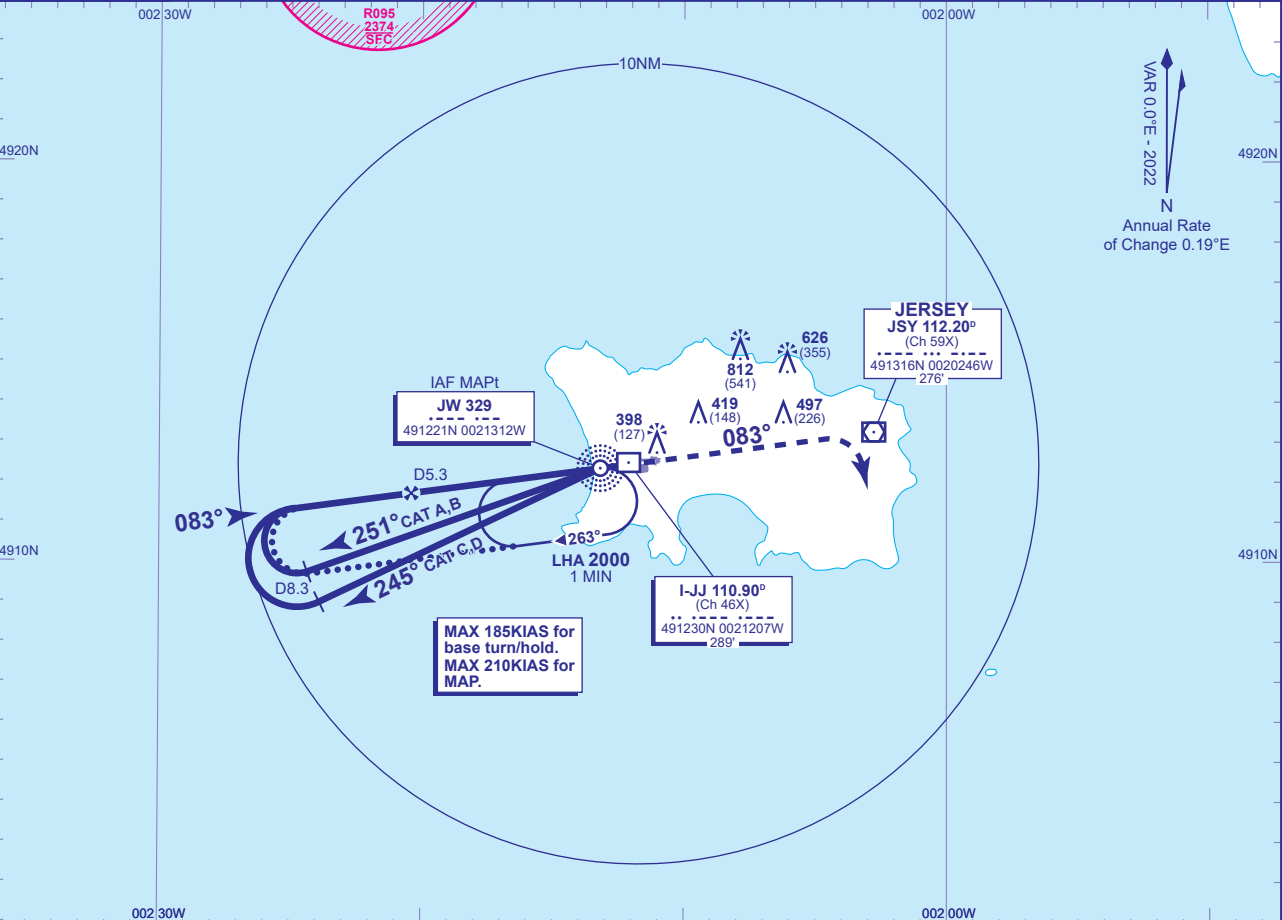
INSTRUMENT APPROACH CHART - ICAO

JERSEY  
NDB(L)/DME  
RWY 08  
(ACFT CAT A,B,C,D)



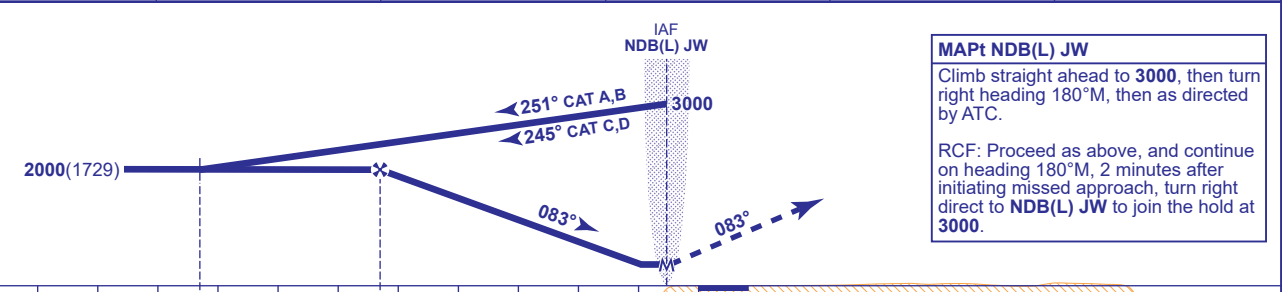
ATC	125.205, 120.450	JERSEY CONTROL	AD ELEVATION	277
APP	120.305, 118.555	JERSEY APPROACH	THR ELEVATION	271
TWR	119.455	JERSEY TOWER	OBSTACLE ELEVATION	812 AMSL (541) (ABOVE THR)
	121.905	JERSEY GROUND	BEARINGS ARE MAGNETIC	
ATIS	134.680	JERSEY INFORMATION		

TRANSITION ALTITUDE	5000
---------------------	------



RECOMMENDED PROFILE Gradient 5.2%, 320FT/NM

DME I-JJ	5	4	3	2	1
ALT(HGT)	1920(1649)	1600(1329)	1280(1009)	960(689)	640(369)



**MAPt NDB(L) JW**  
Climb straight ahead to **3000**, then turn right heading **180°M**, then as directed by ATC.  
  
RCF: Proceed as above, and continue on heading **180°M**, 2 minutes after initiating missed approach, turn right direct to **NDB(L) JW** to join the hold at **3000**.

Aircraft Category		A	B	C	D	Rate of descent	G/S KT	160	140	120	100	80
OCA (OCH)	WITH DME	590(319)	590(319)	590(319)	590(319)		FT/MIN	850	750	640	530	430
	NO DME	640(369)	640(369)	640(369)	640(369)							
VM(C)OCA (OCH AAL)	Total Area	770(493)	770(493)	1210(933)	1210(933)							
	South of RWY 08/26	770(493)	770(493)	1030(753)	1030(753)							

**ALTERNATIVE PROCEDURE EXTENDED HOLDING PATTERN (MAX 185KIAS)**  
Arrive at IAF NDB(L) JW at **3000**. Extend the outbound leg of the NDB(L) JW holding pattern to I-JJ D8.3 descending to **2000(1729)**. Turn right onto the extended FAT, when established, continue as for main procedure.

**AIRCRAFT UNABLE TO RECEIVE DME I-JJ**  
As for main and alternative procedure except fly outbound for 3MIN (CAT A); 2.5MIN (CAT B); 2MIN (CAT C,D) prior to base turn. When established on FAT descend to MDA.

**CHANGE (5/23):** DME I-JJ ELEVATION.